



RV Aranda

CRUISE PLAN

Combine 1 Leg 1 GOF, 1/2016

18. - 21.1.2016

Description of the cruise

Monitoring of chemical and physical parameters (temperature, salinity, dissolved oxygen, hydrogen sulphide, nutrients and dissolved/dispersed oil) in the Gulf of Finland according to HELCOM MONAS and EU Marine Framework Strategy Directive. Data regarding salt water intrusion situation will be gathered.

Additionally

* Water sampling for phosphorus research * Measuring temporal trends in bottom waters * Optical measurements * wave buoy service

Scientific staff:

Chief scientist: Harri Kankaanpää -
CTD chief:
Chief chemist:
IT chief:

Altogether 12 persons in scientific staff.

Departure from: HELSINKI
Departure time: Monday 18.01.2016 at 12:30

Cruising speed: 10,0 knots
 Average station time: 2 h 0 min.

Arrival to: HELSINKI
Arrival time: Thursday 21.01.2016 at 17:04

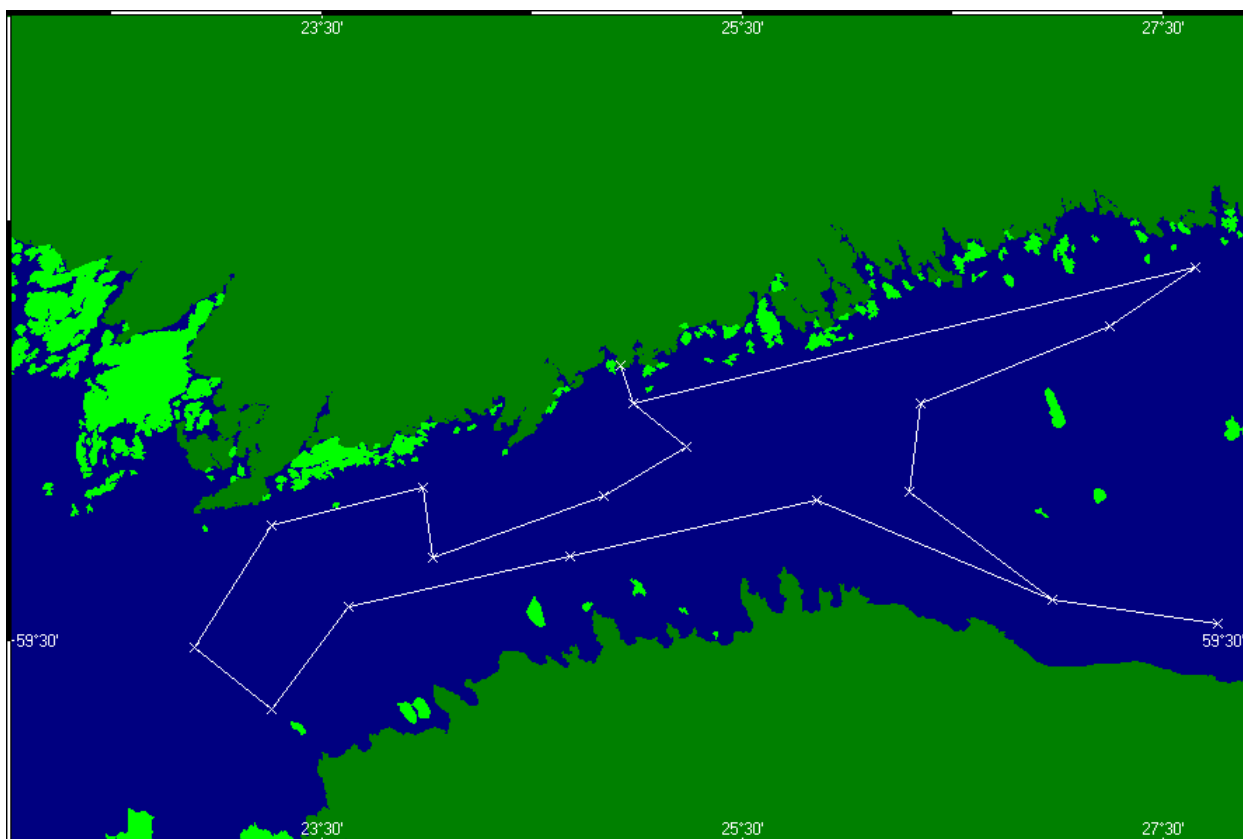
Duration of the cruise: 3 days 4 h 34 min
 Length of the cruise: 466,06 nautical miles
 Number of stations 19. Points with name "P" are just route points without observations.

Route:

Nro	Station	Lat.	Long.	Depth		Arrival		Durat. hh:mm	Speed knots
				[m]	hh:mm	dy	dd.mm.yyyy		
0	HELSINKI	60°09.55'	24°55.37'	0	12:30	Mo	18.01.2016	0:00	S 10,0

1	39A	60°04.01'	24°58.81'	41	13:04	Mo	18.01.2016	2:00	S	10,0
2	AALTO_HKI	59°57.90'	25°14.10'	62	16:03	Mo	18.01.2016	2:00	S	10,0
3	LL7	59°50.79'	24°50.27'	100	19:26	Mo	18.01.2016	3:00	S	10,0
4	LL9	59°42.01'	24°01.81'	69	01:02	Tu	19.01.2016	2:00	S	10,0
5	XII3	59°52.01'	23°58.81'	38	04:03	Tu	19.01.2016	1:30	S	10,0
6	UUS-23_	59°46.61'	23°15.77'	60	07:46	Tu	19.01.2016	1:30	S	10,0
7	LL12	59°29.01'	22°53.81'	82	11:21	Tu	19.01.2016	2:30	S	10,0
8	F62	59°20.01'	23°15.81'	95	15:18	Tu	19.01.2016	2:30	S	10,0
9	JML	59°34.91'	23°37.61'	80	19:39	Tu	19.01.2016	2:00	S	10,0
10	GF1	59°42.30'	24°40.93'	84	00:56	We	20.01.2016	2:00	S	10,0
11	GF2	59°50.31'	25°51.41'	84	06:34	We	20.01.2016	1:30	S	10,0
12	F45C	59°36.00'	26°58.50'	51	11:45	We	20.01.2016	1:30	S	10,0
13	GF4	59°32.58'	27°45.91'	35	15:40	We	20.01.2016	1:30	S	10,0
14	F45C	59°36.00'	26°58.50'	51	19:36	We	20.01.2016	0:00	S	10,0
15	Trilat WP	59°51.51'	26°17.69'	?	22:10	We	20.01.2016	0:00	S	10,0
16	LL3A	60°04.03'	26°20.80'	68	23:26	We	20.01.2016	1:30	S	10,0
17	XV1	60°15.00'	27°14.82'	64	03:50	Th	21.01.2016	1:30	S	10,0
18	KYVY 8A	60°23.28'	27°39.48'	?	06:49	Th	21.01.2016	1:30	S	10,0
19	39A	60°04.01'	24°58.81'	41	16:31	Th	21.01.2016	0:00	S	10,5
20	HELSINKI	60°09.55'	24°55.37'	0	17:04	Th	21.01.2016	0:00	S	10,5

Route map:



Cruise plan is printed at 15.01.2016 a 16:31.